



YANKARI GAME RESERVE

WCS QUARTERLY REPORT: JULY-SEPTEMBER 2019



Report Prepared By:
Nachamada Geoffrey
WCS Yankari Landscape Director



SUMMARY

This report describes law enforcement efforts and SMART-based ranger patrols managed by WCS in Yankari Game Reserve for the period July to September 2019. A total of 1,930 patrol man days (48 patrols) were completed and rangers made seven arrests (6 hunters and 1 fisherman) as a result. Zero elephant carcass was recorded and no elephant poacher was arrested during the period. However, elephant crop raiding was reported from Dan, Dagudi, Yelwan-Duguri, Mainamaji, and Gaji-Gamu communities. Several livestock grazing incidences were recorded during the period as we continue to implement zero tolerance on cattle grazing in the reserve. With support from a small plane (see picture on page 5), satellite collars were successfully put on six Yankari elephants with funding support from the USFWS and the ECF. Yankari ranger (Suleiman Saidu) emerges as the only Nigerian ranger this year amongst 50 other rangers across Africa recognized for the African Ranger Awards by the Paradise Foundation. More leopard pictures were captured with the aid of camera traps confirming their continued presence in the reserve. Three joint patrols with the army were completed during the reporting period. Following an outbreak of yellow fever, WCS Yankari research assistant (Iliyasu Simon Bindi) and Yankari ranger (Gad Durami) died at the ATBU teaching hospital in Bauchi after brief illness.

RESULTS AND DISCUSSION

A total of 48 SMART-based patrols were organized during this period covering a total distance of 4,259 km and 1,930 patrol man-days (see Appendix 2 for more details). Rangers made 7 arrests (6 hunters and 1 fisherman) during the reporting period (see Appendix 1 for more details). Levels of protection *within the areas patrolled* are adequate but some areas of the reserve were left unprotected (see Map 1 below) during this reporting period due to shortage of funds and firearms to organize more patrols. There is an urgent need to increase the number of patrols as four patrols per week are not enough to cover Yankari entirely. Three joint patrols with the army were completed this quarter to boost ranger morale and to assure the surrounding communities of our commitment and partnership with other security agencies to not only keep the reserve safe but also to boost levels of security for communities surrounding the reserve.

PATROL STRATEGY AND CAMPING PATROL SCHEDULE

The current patrol strategy is limited by the number of firearms and vehicles available. Currently, we can only organize four camping patrols each week. Four teams consisting of six-seven rangers per team were sent out on camping patrol for seven days. With only limited resources available the current patrol strategy targets vulnerable areas rather than trying to cover the entire reserve. This strategy has also enabled us to focus more attention on the remaining elephants. There were no fixed camping locations, instead rangers continuously change their location overnight both to increase the area coverage but also to minimize the risk of the camp being discovered by poachers and attacked. Data is collected using handheld computers running CyberTracker software which automatically records GPS coordinates for every observation. Data were analyzed using SMART software. Table 1 below summarizes the patrol data for the period.



WCS Yankari research assistant (Iliyasu Simon Bindi) who passed on in August 2019



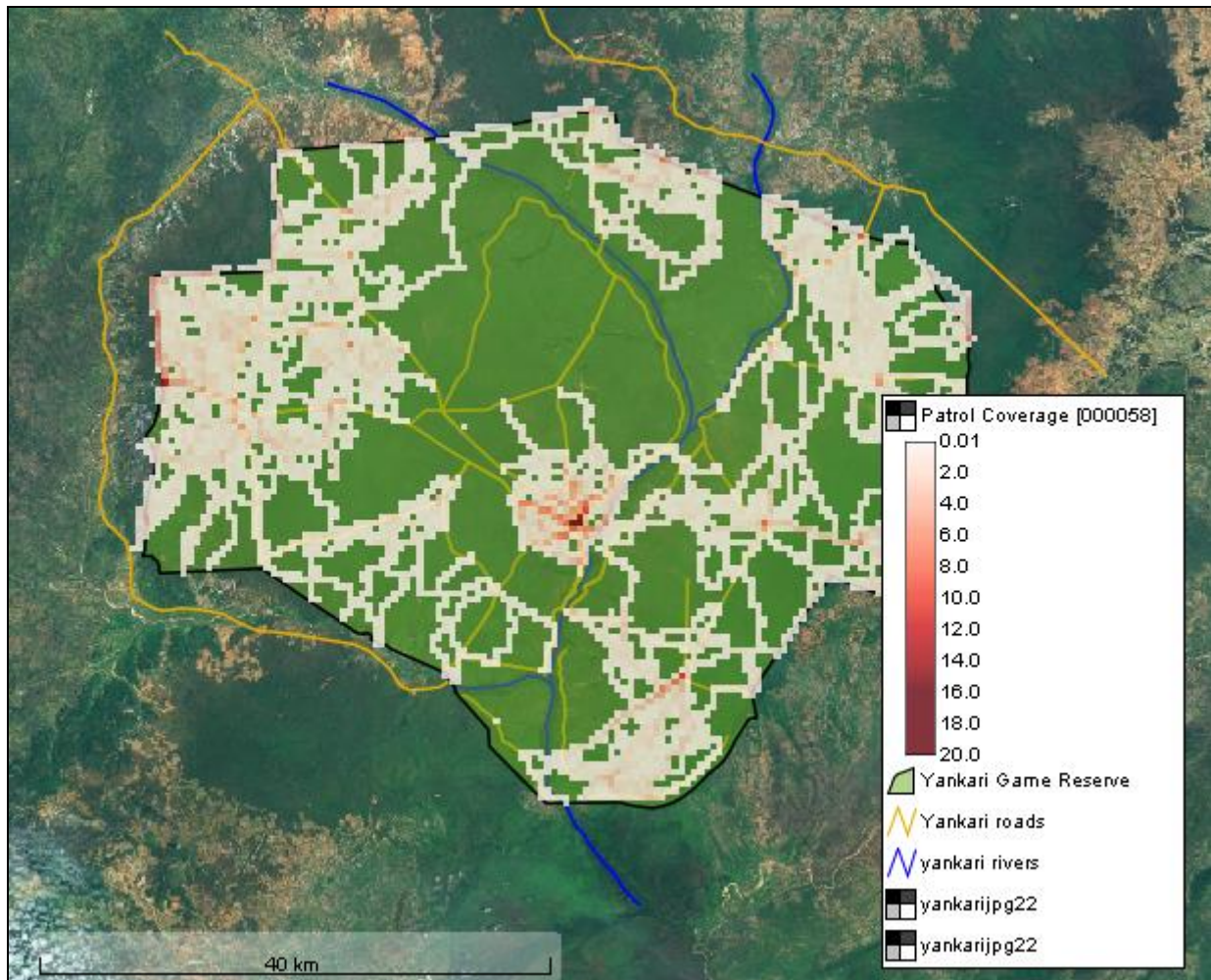
Yankari ranger (Gad Durami) who passed on in September 2019

PATROL EFFORT

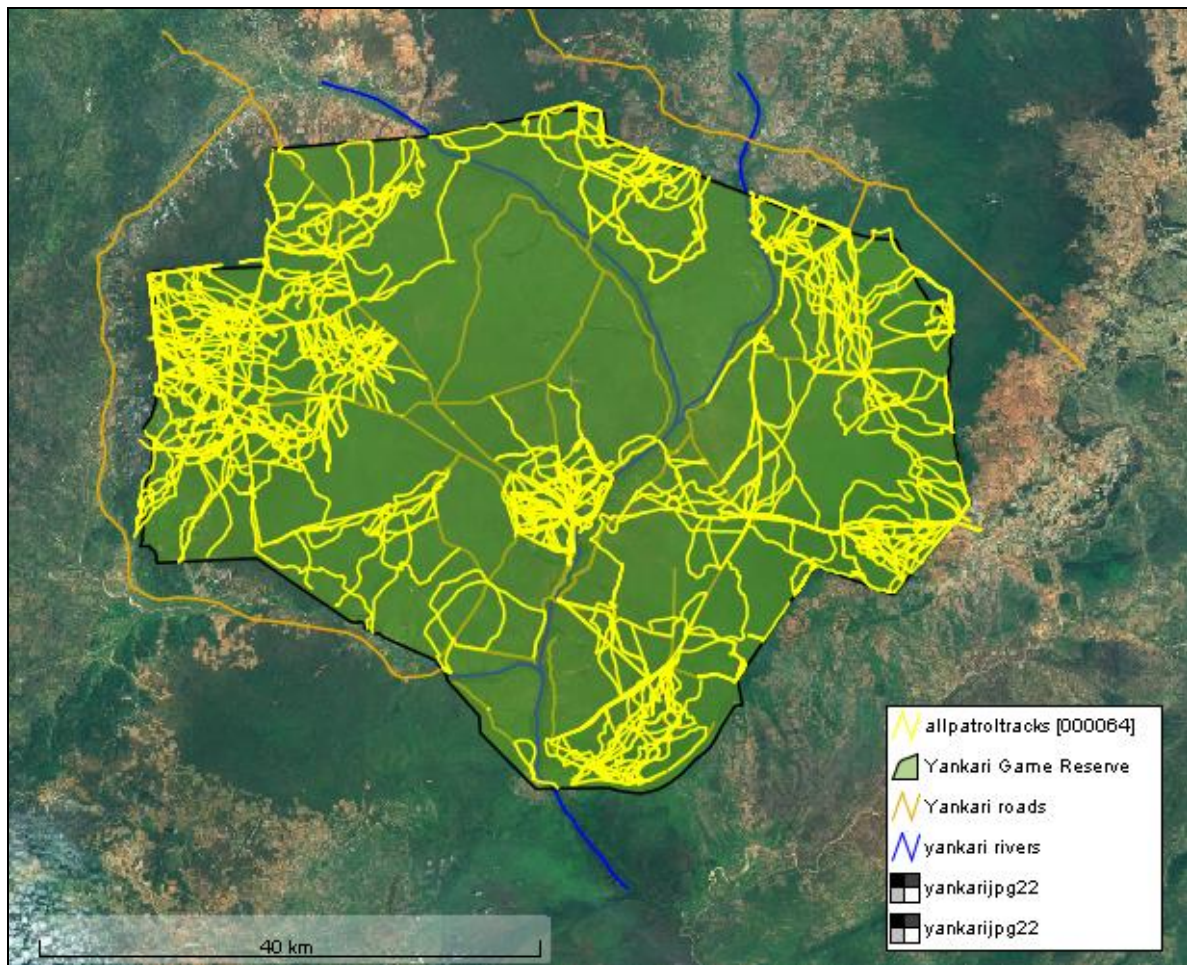
In *Map 1*, the darker red part of the grid map indicates areas that have been more frequently patrolled, the grey portions represent areas that were less patrolled while the un-shaded parts of the grid represents areas that were not patrolled during the reporting period.

Table 1. Summary of patrol effort for the period July to September 2019

<i>No of Patrols</i>	<i>Distance (km)</i>	<i>Hours</i>	<i>No of Days</i>	<i>Patrol Man Days</i>
48	4,259	3,788	304	1,930

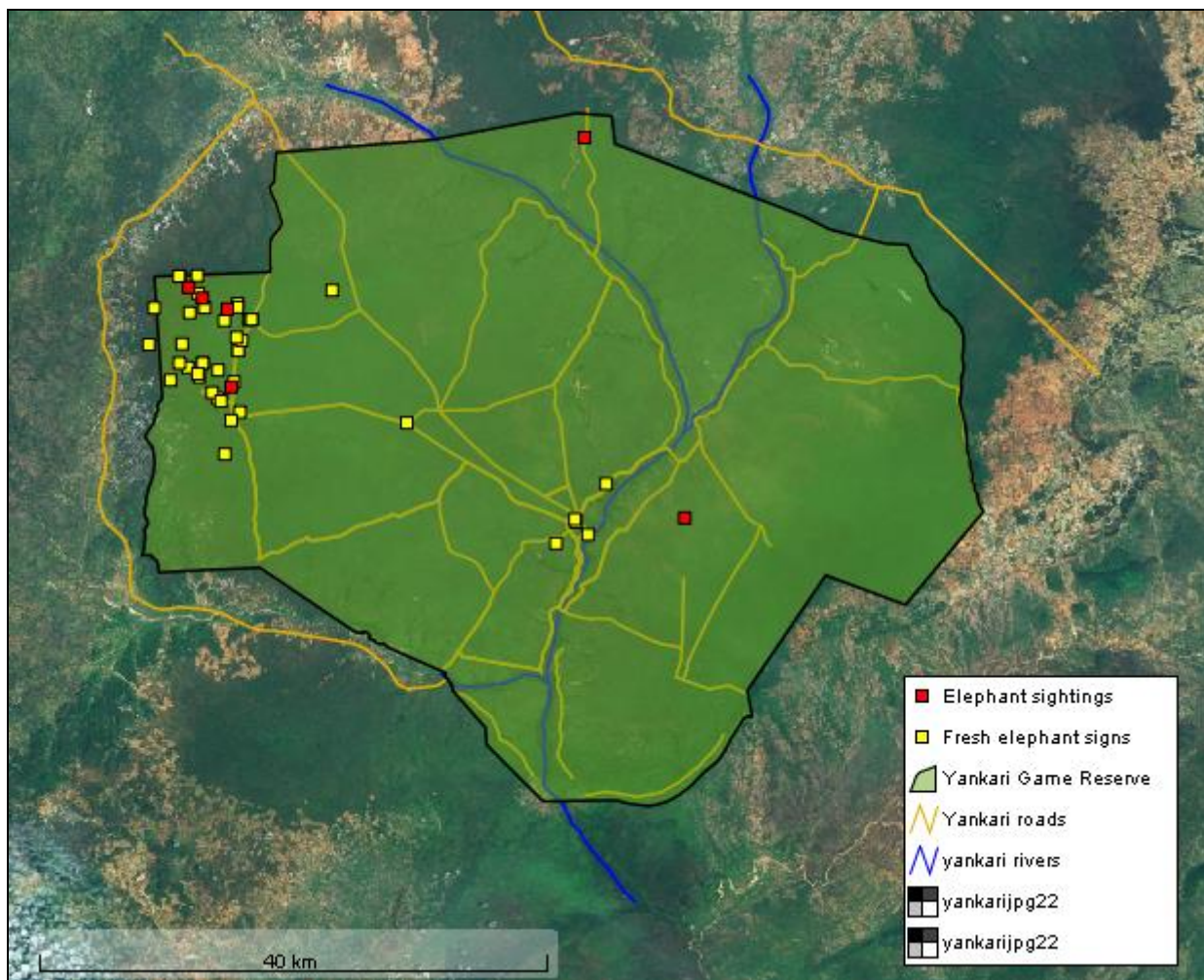


Map 1: Patrol effort in km walked per grid cell for July-September 2019. Darker red colour indicates areas of more intense patrol coverage.



ELEPHANT CONSERVATION

Fresh (1-3 days old) elephant sign and elephant sighting was recorded in the reserve during ranger patrols, see Map 3 below. Crop raiding by elephants was reported from Dan, Dagudi, Yelwan-Duguri, Mainamaji, and Gaji-Gamu. Rangers were sent to the areas concerned, although typically elephants raid crops overnight and by the time the rangers arrive the following morning the elephants have already left and returned to the reserve. Zero elephant carcass was recorded and no elephant poacher was arrested during the period. With funding support from the ECF and the USFWS satellite collars were fitted on six Yankari elephants with the use of plane hired from Private Flyers International from Kaduna. The collars now help us to track the location of the elephants and provide close protection.



Map 3: Elephant Activities Recorded by All Ranger Patrols July-September 2019



Richard Harvey with other veterinary doctors and Yankari rangers putting a GPS/satellite collar on an elephant, September 2019

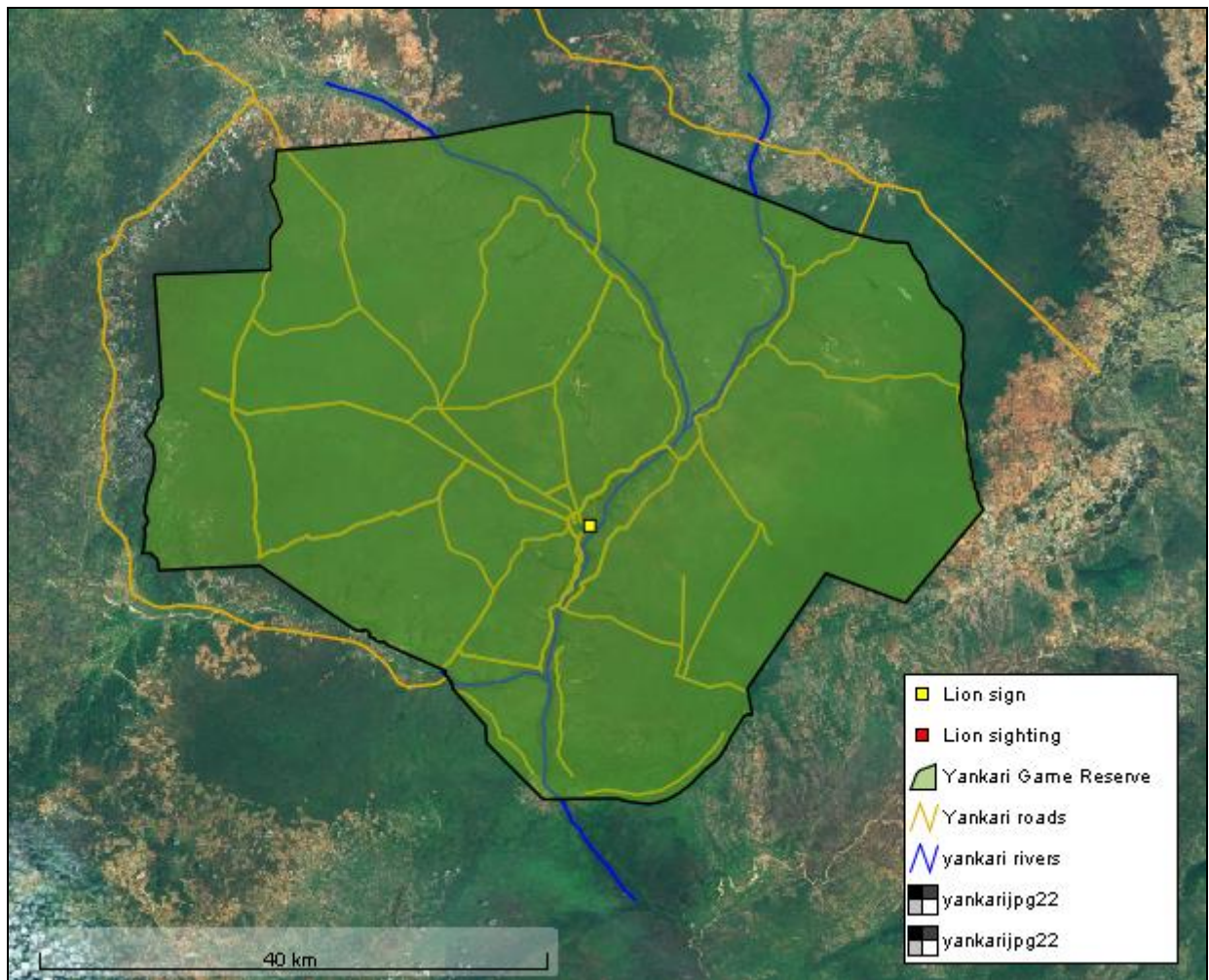
LION CONSERVATION

No lion sighting was reported by ranger patrols but one fresh lion sign was recorded during the period (see map 4 below). Fresh lion sign is sign that is 1-3 days old.

However, lion roaring was reported three times at night from the Wikki camp. One lion sighting was also reported in Wikki camp by hotel staff at night during this reporting period.



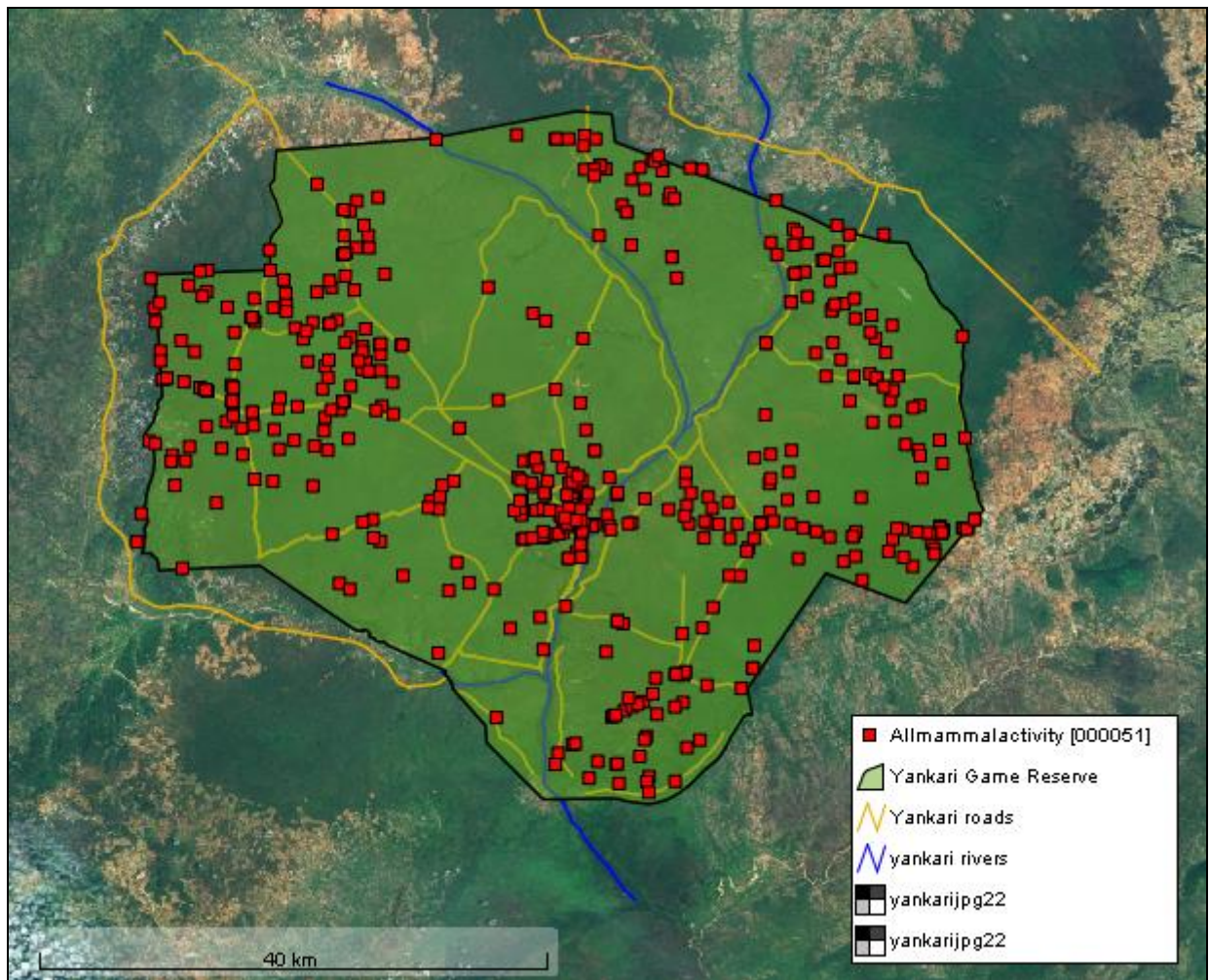
Leopard captured with a camera trap in the Eastern part of the reserve



Map 4: Lion Activities Recorded by All Ranger Patrols July-September 2019

ALL OTHER MAMMAL SIGHTINGS

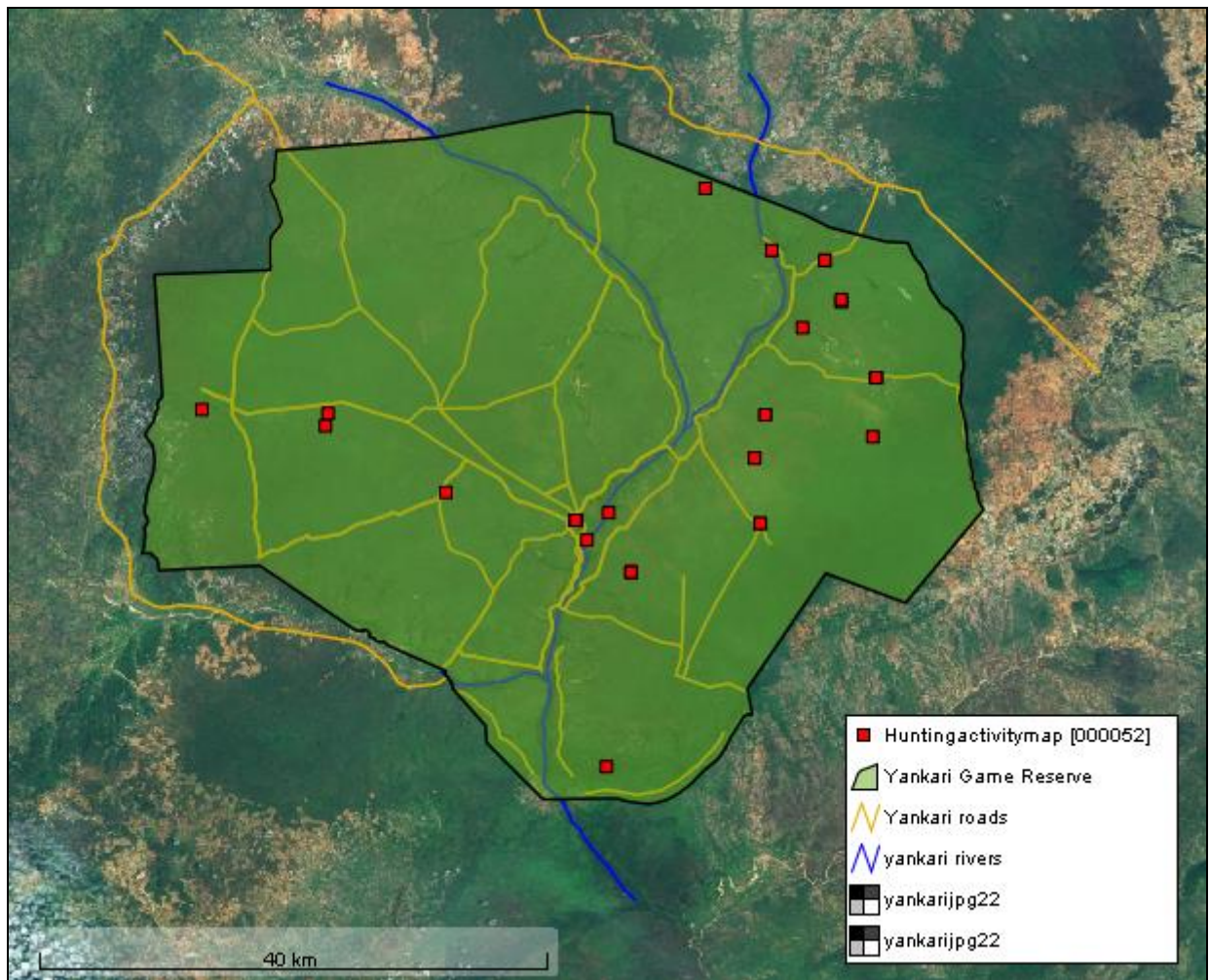
Various other large mammals were sighted within the reserve (see Map 5 below) including hippos, baboons, waterbuck, roan antelope, buffalo, hartebeest, patas monkey, tentalus monkey, bushbuck and warthog.



Map 5: Location of All Other Mammal Sightings July-September 2019

HUNTING EVIDENCE

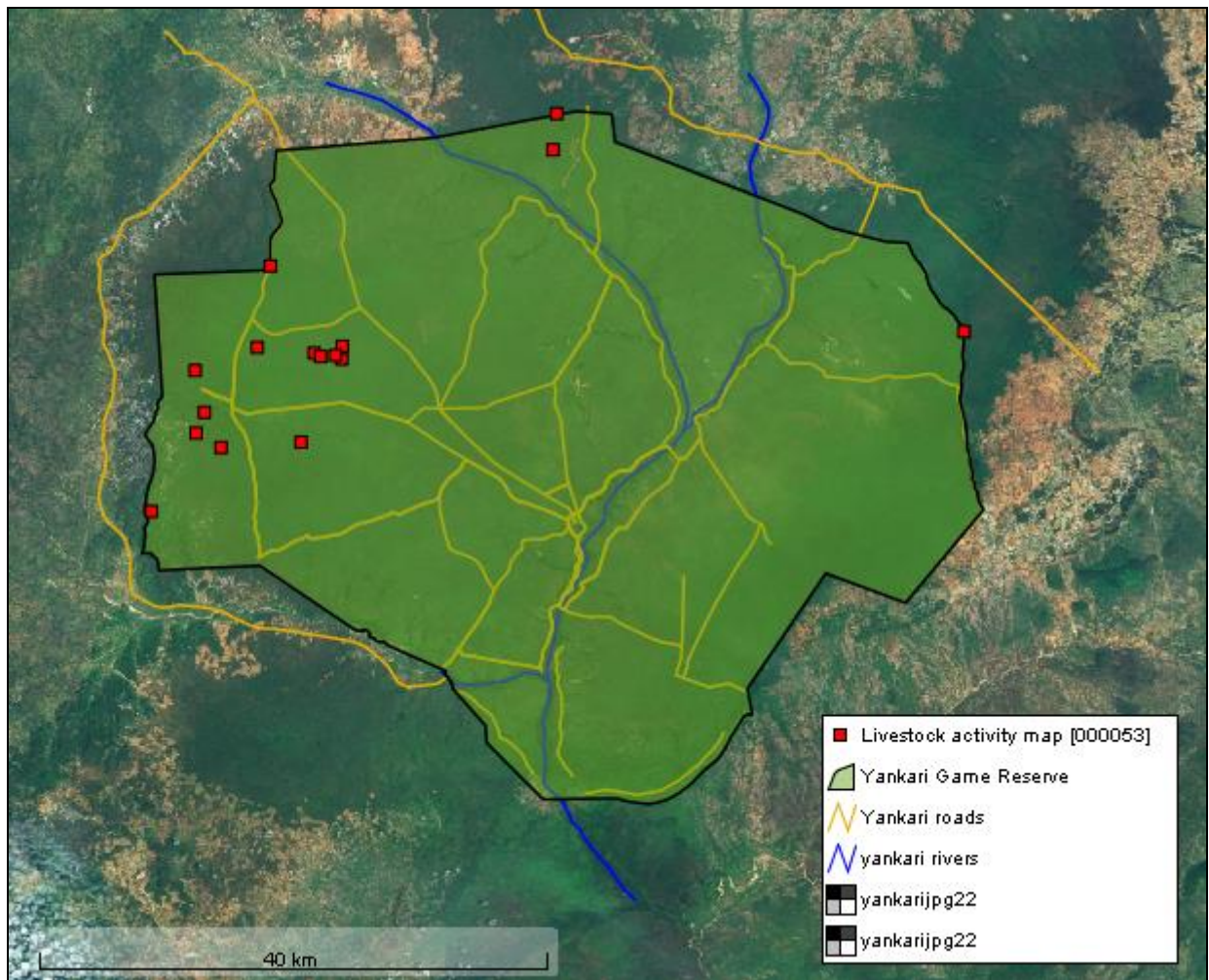
Hunting continues to be problem despite the arrest of six hunters (Appendix 1). Hunting signs recorded this period is shown in Map 6 below.



Map 6: Hunting Activity Recorded by All Ranger Patrols July-September 2019

LIVESTOCK GRAZING

Livestock grazing in the reserve was encountered during the period as we continue to enforce zero tolerance as a short term solution until we find a lasting solution. Livestock grazing sign recorded this reporting period is shown in Map 7 below. The livestock owners would send in small children with the cattle or send the cattle unaccompanied by any human. No livestock grazer was arrested during the reporting period as we continue to enforce zero tolerance on cattle grazing in the reserve as a short term solution before we find a long term solution to the problem.



Map 7: Livestock Grazing Activity Recorded by All Ranger Patrols July-September 2019

CHALLENGES FACED

- **Lack of Payment of Counterpart funding by the Bauchi State Government (BASG).** WCS is still waiting to receive counterpart funding from the BASG for over twenty (20) months now. The lack of payment of the funds by the state government has put pressure on the limited funds WCS has and made it tough to sustain current patrols and impossible to increase the patrols.
- **Elephant crop raiding and human-elephant conflict.**
- **Outdated wildlife law and the lack of deterrent.** The Yankari protection law is outdated and the penalties need strengthening to act as a deterrent. If there are tough enough jail sentences to offenders as deterrent, hunting pressure would be mitigated.
- **Problems with Patrol Vehicles.** The four vehicles we have which help to support ranger teams while on patrol are old now due to overuse, bad road network and frequent breakdown.
- **Poaching** remains a big problem. The outdated Yankari wildlife is not a deterrent for people to stop hunting notwithstanding rangers have continued to make significant arrests.
- **Firearms.** The firearms that the rangers use are old now and would need replacement and if possible an upgrade from using shotguns to rifles.

RECOMMENDATIONS

1. BASG should provide its counterpart funding full and in time so that protection activities can be sustained.
2. The VHF radio system should be mounted on the existing Airtel mast so that it can continue to support all patrols as soon as approvals are secured.
3. Purchase additional firearms to increase patrol coverage.
4. Review the Bauchi State wildlife law and strengthen the existing penalties.
5. Purchase additional vehicles to increase activities and supervision.
6. Complete renovation and repair of the reserve's network of tracks and bridges.

ACKNOWLEDGEMENTS

We are grateful to the Bauchi State Government, the Elephant Crisis Fund, the North Carolina Zoo, United States Fish and Wildlife Service, Lion Recovery Fund, French Embassy in Nigeria, Tusk Trust, Omaha Zoo, CITES-MIKE and the A.P. Leventis Conservation Foundation for their support.

APPENDICES

Appendix 1: Seven Arrests and Court Outcome July-September 2019

Date	Name	Location	Offence and exhibit	Village	Outcome
13/07/19	1. Mohammed Garba	Buri	Hunting in the reserve with a Dane gun, knife, gun powder, mosquito net and a torchlight	Milli	Sent three years in jail
19/07/19	2. Dan Barno Girema	Dalamiri	Fishing in the reserve with fishing nets	Mai-Ari	Sent one year in jail
05/08/19	3. Musa Bappa Kufa	Kufayin Fanguru	Hunting in the reserve with a Dane gun, knife, gun powder, mosquito net and a torchlight	Kufa	Sent one year in jail
08/08/19	4. Umar Ali 5. Yusuf Ibrahim	Gwalkahe	Hunting in the reserve with 2 Dane guns, gun powder, ammunition and food supplies	Futuk	Sent 18 months in jail
11/08/19	6. Garba Maishodari 7. Babangida Ibrahim	Tattabara	Hunting with 3 Dane guns, 2 empty sacks, charms, food supplies	Jada	Sent one week in remand and charged N30, 000 fines.

Appendix 2: 48 Camping Patrols Completed July-September 2019

No	Area patrol	Patrol Start	Patrol End	Patrol Man Days
1.	Kwala, Tungan Kiyahsi, Jada, Tattabara, Kariyo, wolakerol, Dalamiri, Gale, Shaushau, Guturu	02/07/19	08/07/19	49
2.	Daban Maje, Gwambaza, Libji, Garangaran, Tabakare, Borkono, Mustafa Bawa	02/07/19	08/07/19	28
3.	Malla, Giwa, Dogon Kurmi, Rendel	02/07/19	08/07/19	35
4.	Faliyaram, Jibrin Nayaya, Kani, Dagudi, Gaji-Gamu, Dogon Ruwa, Duguri	02/07/19	08/07/19	42
5.	Gwambaza, Buri, Dagudi, Jibrin Nayaya, Shaman, Shaffa	09/07/19	15/07/19	49
6.	Borkono, Saltlick A & B, Dagudi, Garangaran, Libji, Shaman	09/07/19	15/07/19	35
7.	Tungan-Kiyashi, Malla, Pali, batta, Boga, Yalo, Ruwan-Gogo, Gale	09/07/19	15/07/19	42
8.	Ampara, Tungulum, Kwanan-Kirya	09/07/19	15/07/19	42
9.	Jibrin Nayaya, Shaman, Yelwan-Duguri, Dagudi	16/07/19	22/07/19	35
10.	Kali-Imam, Kwala, Jada, Dalamiri, Dogon-Kurmi, Tungan-Kiyashi	16/07/19	22/07/19	42
11.	Giwa, Rendel, Gale, Jada, Ampara, Wolakerol	16/07/19	22/07/19	49
12.	Shaman, Nata'ala, gobur, Duguri, Hawan Kantana, Dagudi	16/07/19	22/07/19	32
13.	Ampara, Gale, Rimi, Shaushau, Dogon-Kurmi, Wolakerol, Kwanan-Kirya	23/07/19	28/07/19	36
14.	Kariyo, Shaushau, Dogon-Kurmi, Kwala, Jada	23/07/19	28/07/19	24
15.	Kwanan-Kawo, Shaman, Dagudi, Ahmadu Bello	23/07/19	28/07/19	30
16.	Garangaran, Tabakare, Boerkono, Jibrin Nayaya	23/07/19	28/07/19	30
17.	Kali Imama, Ruwan-Rakumi, Tungulum, Tungan-Baki	29/07/19	30/07/19	12
18.	Mainamaji, Yelwan Duguri	29/07/19	30/07/19	14

19.	Kali Imam, Ruwan-Rakumi, Kariyo, Giwa, Bela Balewa, Jarkasa, Tungan-Maliki	01/08/19	05/08/19	30
20.	Rimi, Kuturun Kuka, Jada, Gwalkahe	01/08/19	05/08/19	30
21.	Shaman, Dagudi, Gaji-Gamu, Jibrin Nayaya, Faliyaram, Mainamji,	01/08/19	05/08/19	40
22.	Borkono, Garangaran, Ahmadu Bello, Shaman	01/08/19	05/08/19	20
23.	Borkono, Saltlick A & B, Dagudi, Garangaran, Libji, Shaman	06/08/19	09/08/19	32
24.	Wolakerol, Dalamiri, Gale, Shaushau, Guturu Kwala, Tungan Kiyahsi, Jada,	06/08/19	09/08/19	32
25.	Malla, Giwa, Dogon Kurmi, Rendel	10/08/19	19/08/19	70
26.	Faliyaram, Jibrin Nayaya, Kani, Dagudi, Gaji-Gamu, Dogon Ruwa, Duguri	13/08/19	19/08/19	56
27.	Kuka, Mainamaji, Jada, Wolakerol	20/08/19	26/08/19	63
28.	Daban Maje, Gwambaza, Libji, Garangaran, Tabakare, Borkono, Mustafa Bawa	20/08/19	26/08/19	49
29.	Tattabara, Kariyo, Tungan-Kiyashi, Malla, Pali, batta, Boga, Yalo, Ruwan-Gogo, Gale	20/08/19	26/08/19	49
30.	Ampara, Tungulum, Kwanan-Kirya	27/08/19	02/09/19	49
31.	Kali-Imam, Kwala, Jada, Dalamiri, Dogon-Kurmi, Tungan-Kiyashi	27/08/19	02/09/19	49
32.	Jibrin Nayaya, Shaman, Yelwan-Duguri, Dagudi	27/08/19	02/09/19	63
33.	Giwa, Rendel, Gale, Jada, Ampara, Wolakerol	27/08/19	02/09/19	56
34.	Shaman, Nata'ala, Duguri, Shaffa, Dagudi, Konkoni, Dogon-Ruwa, Kuka, Yelwan-Duguri	03/09/19	09/09/19	49
35.	Libji, Jada, Tungan-Kiyasha, Kwala, Tungulum, Malla, Jar-Kasa	03/09/19	09/09/19	42
36.	Shaman, Kwaffa, Farar-Kasa, Yelwan-Duguri	03/09/19	09/09/19	42
37.	Mawulgo, Kariyo, Malla, Shaushau, Bella Balewa, Gajin-Gwaza, Ruwan-Rakumi	10/09/19	16/09/19	42
38.	Garangaran, Kariyo, Wolakerol, Shaushau, Ruwan-Rakumi, Guturu, Yalo, Kwala	10/09/19	16/09/19	35

39.	Kalban, Jibrin Nayaya, Dagudi, Gaji-Gamu, Shaman, Maikonkoni, Duguri, Jan-Dutse, Debigi	10/09/19	16/09/19	35
40.	Yelwan Duguri, Kalban, Faliyaram, Shaman, Buri, Yelwan Duguri	10/09/19	16/09/19	49
41.	Kali Iman, Ruwan-rakumi, Tattabara, Jada, Shaushau, Tungan-Dutse, Libline	17/09/19	23/09/19	49
42.	Garangaran, Rimi, Malla, Ruwan-Gogo, Kwala, Shaushau, Tungan-Kiyashi, Tungan-Baki	17/09/19	23/09/19	28
43.	Nata'ala, Faliyaram, Dagudi, Jibrin-Nayaya, Gaji-Gamu, Farar-Kasa	17/09/19	23/09/19	35
44.	Borkono, Saltlick A & B, Garangaran, Shaman, Mustapha-Bawa, Daban-Maje	17/09/19	23/09/19	35
45.	Filin-Tsintsiya, Yalo, Tungulum, Wolakerol, Shaushau, Kwala, Gwalkahe, Tattabara	24/09/19	30/09/19	42
46.	Kwala, Filin-Tsintsiya, Kariyo, Pali, Malla, Tungan-Baki, Tungan-Kiyashi, Dogon-Kurmi	24/09/19	30/09/19	42
47.	Garangaran, Gwambaza, Shaman, Yelwan-Duguri, Faliyaram, Farar-Kasa, Yelwan-Duguri	24/09/19	30/09/19	49
48.	Borkono, Gaji-Gamu, Saltlick A & B, Dagudi, Shaman, Kwaffa, Jibrin-Nayaya, Duguri	24/09/19	30/09/19	42